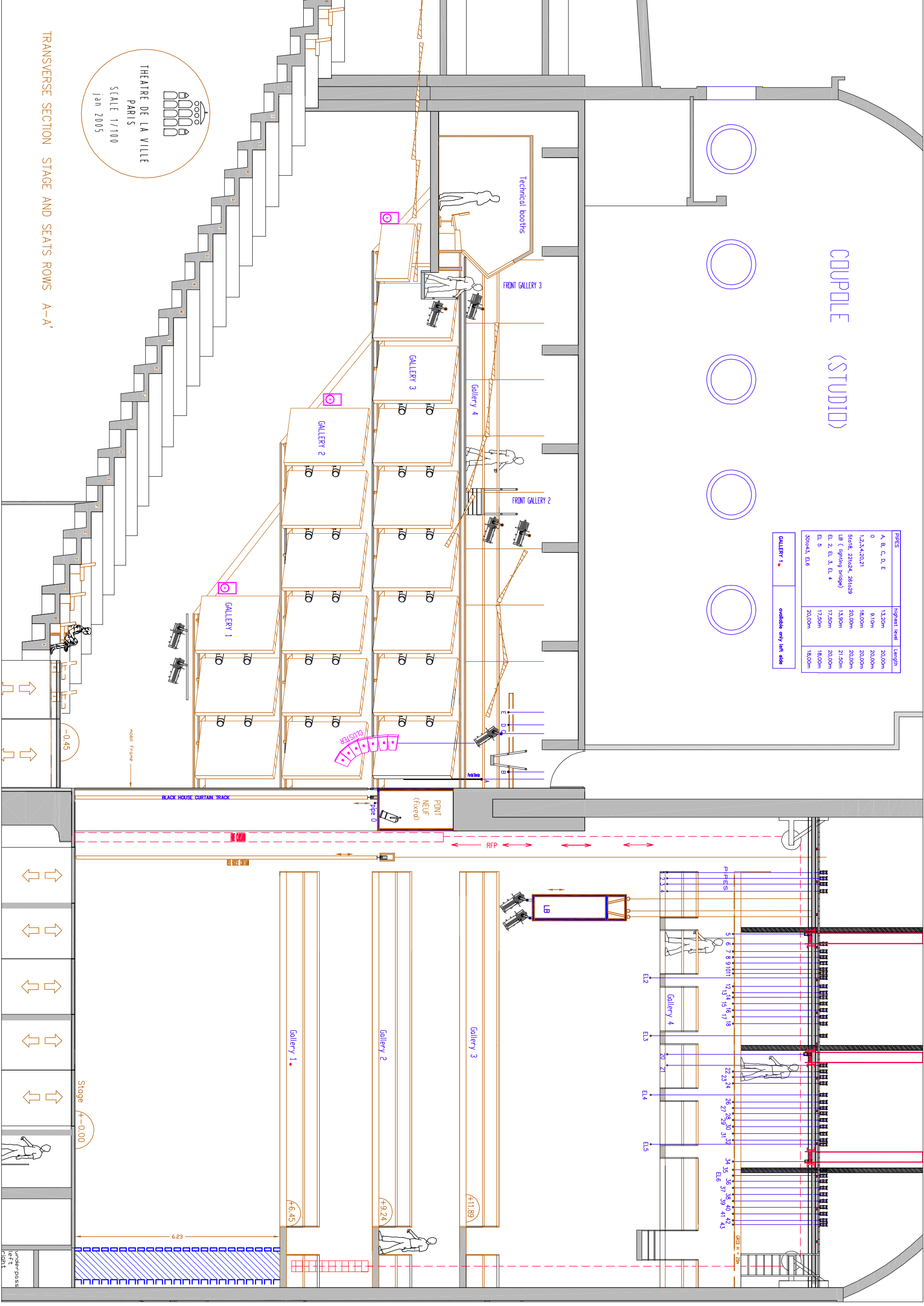


COUPLE (STUDIO)

PIPES	Height level	Length
A, B, C, D, E	13,20m	20,00m
0	9,10m	20,00m
1,2,3,4,20,21	18,00m	20,00m
Stair, 22to24, 28to29	20,00m	20,00m
LB (lighting bridge)	13,90m	21,50m
EL 2, EL 3, EL 4	17,50m	20,00m
EL 5	17,50m	18,00m
30to43, EL 6	20,00m	18,00m

GALLERY 1 • available only left side



THEATRE DE LA VILLE
PARIS
SCALE 1/100
Jan 2005

TRANSVERSE SECTION STAGE AND SEATS ROWS A-A'

underpass left